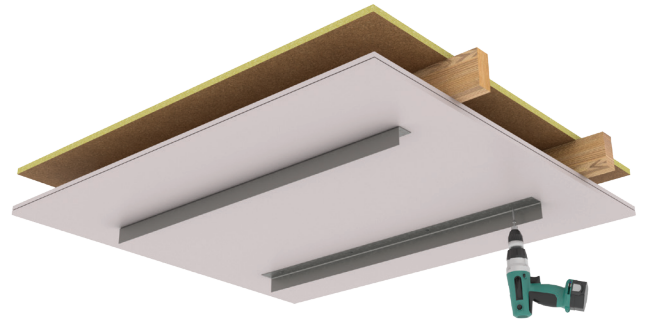


# Installation Guide

## FIREFLYBatt 2 hour Horizontal Boxout System for fire rated ceilings

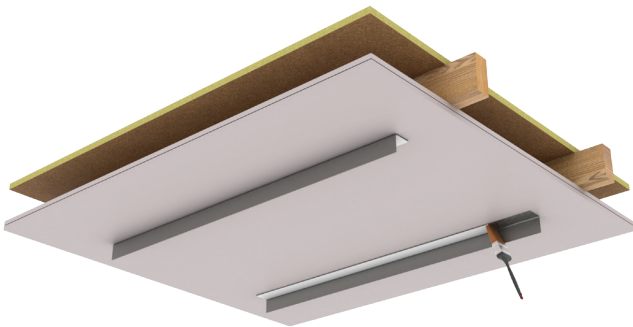
### Step 1

Install 2 parallel 50mm x 50mm x 1.5mm steel angles to the underside of the fire rated plasterboard ceiling using minimum 75mm long 8g drywall screws at 300mm centers.



### Step 2

Paint the underside of the angle and the top side of the FIREFLYBatt with FIREFLYMastic.



### Step 3

Offer up a layer of FIREFLYBatt and fix it into the down-leg of the angle using 75mm 8g self-tapping screws and penny washers at 200mm centers.



### Step 4

Once the first layer of FIREFLYBatt is installed, repeat the process for the second layer ensuring that all abutments and joints are coated with FIREFLYMastic.



### Step 5

Install the second layer of FIREFLYBatt by laminating it to the first layer ensuring a minimum 200mm stagger offset joint. Secure into place with FIREFLYMastic and 90mm pigtail screws at 100mm centers at the top and bottom of the sheet. Add 90mm pigtail screws across the centre line of the 1200 mm sheet.



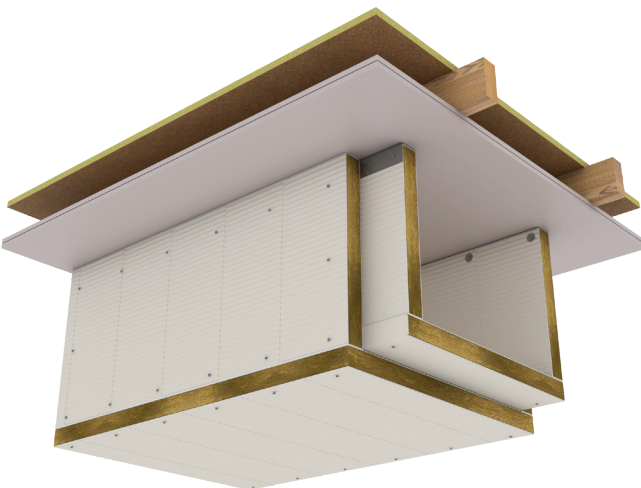
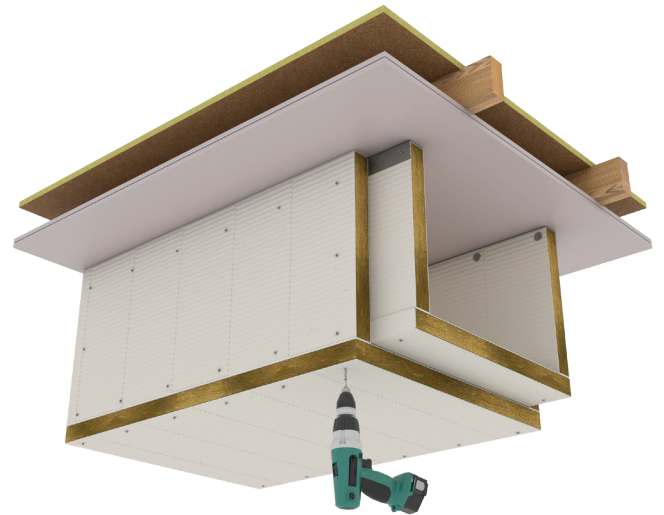


### Step 6

Coat all the joints and abutments with FIREFLYMastic, offer up the first horizontal layer of FIREFLYBatt and secure into place by screwing through the down-legs of the FIREFLYBatt into the sides of the horizontal FIREFLYBatt using 90mm pigtail screws at 100mm centers.

### Step 7

Laminate the second layer of FIREFLYBatt to the first using FIREFLYMastic and 90mm pigtail screws at 100mm centers at the long edges of the FIREFLYBatt and 3 pigtail screws down the centre line.



### Step 8

Continue with the same process, cutting the FIREFLYBatt into jigsaw pieces around existing service penetrations and treating them locally with the correct FIREFLY fire stopping systems detailed within Warringtonfire Report FAS190235.