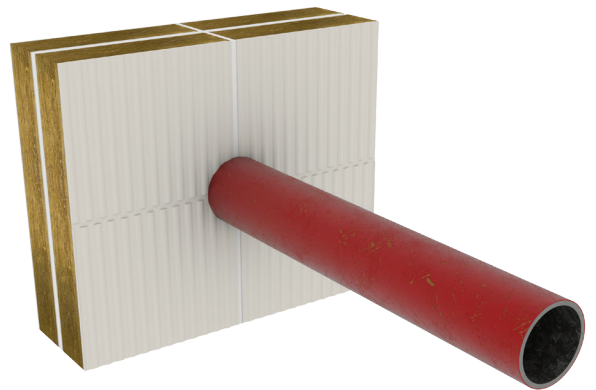


Installation Guide

FIREFLY Penowrap for steel pipes

Step 1

Install the service into the required layers of FIREFLYBatt according to the Item ID in Warringtonfire Report FAS190235 or substrate according to the specific ID within Warringtonfire Report FAS190236.



Step 2

Seal the service to the FIREFLYBatt or corehole substrate according to the requirements given for the service ID's in Warringtonfire Reports FAS190235 or FAS190236.

Step 3

Measure the perimeter / circumference of the service to be wrapped and add 50mm. Cut the FIREFLY Penowrap to that length.



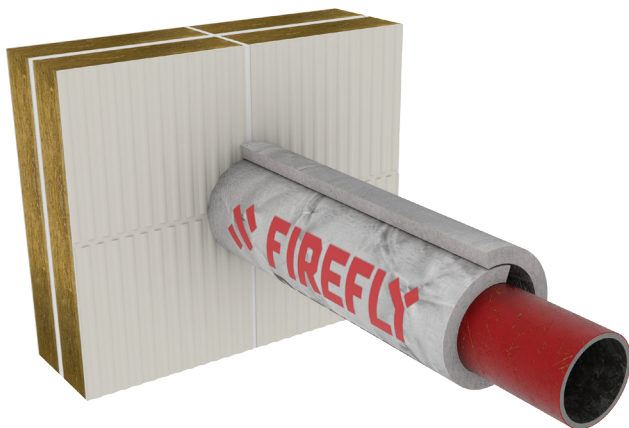
Step 4

Apply a 6mm width bead of FIREFLYMastic to the edge of the FIREFLY Penowrap that will interface with the FIREFLYBatt or substrate, such that the FIREFLY Penowrap will adhere to the edge of the FIREFLYBatt or substrate.



Step 5

Wrap FIREFLY Penowrap tightly around the service.



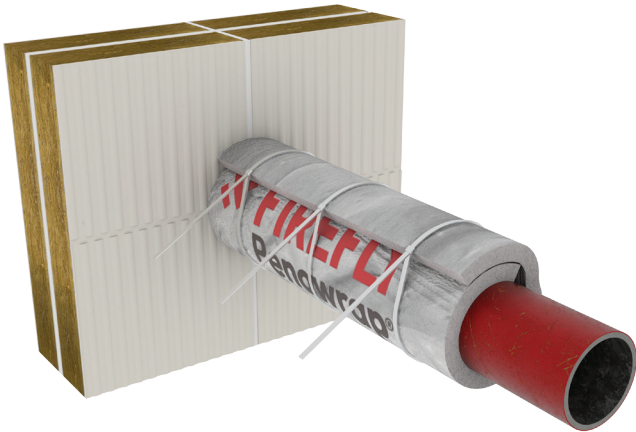
Step 6

Overlap the joint of FIREFLY Penowrap by a nominal 50mm and hold in place using FIREFLY Foil Tape over the joint.



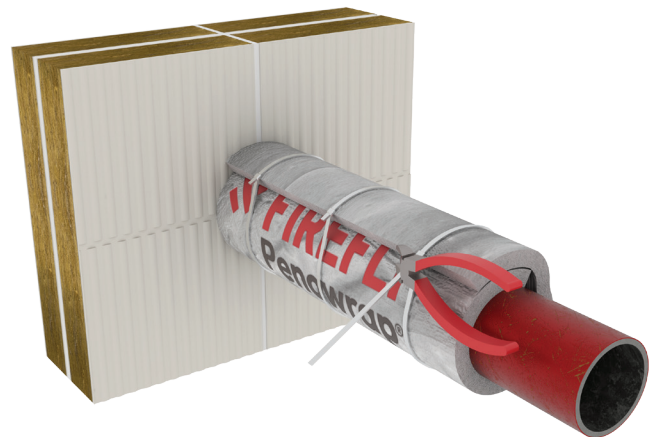
Step 7

Install stainless steel cable ties nominal 50mm from each end and then at 100mm centers.



Step 8

Trim off the excess cable ties for a neat finish.



Install a fillet or bead of FIREFLYMastic with the dimensions given in the specific Warringtonfire Report ID if required. In some instances, a second layer of FIREFLY Penowrap is required.

- For walls, install the FIREFLY Penowrap on both sides.
- For floors, install topside only or both sides according to the System ID's described in Warringtonfire Reports FAS190235 or FAS190236.