

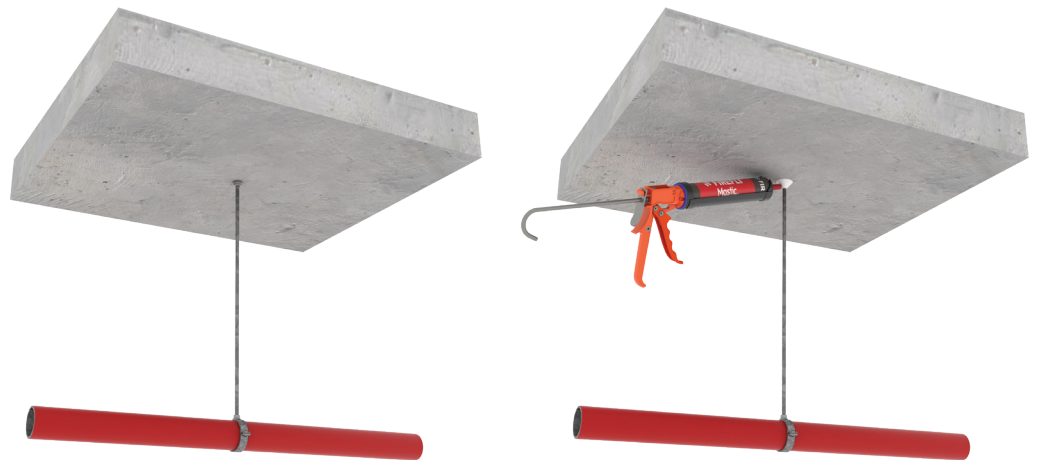
Installation Guide

FIREFLY Penowrap Hanger & Support

Part 1 | Steel Threaded Rod and Clamp Protection (minimum 12 mm OD)

Step 1

Apply a nominal 6mm bead of FIREFLYMastic at the junction between the threaded rod and concrete soffit.



Step 2

Take an offcut of FIREFLY Penowrap and wrap it around the threaded rod four times to determine the width of wrap required (W).

Step 3

Measure the distance between the soffit and the pipe. (D)



Step 4

Cut the FIREFLY Penowrap using a long bladed knife according to the measurements of (W x D), wrap it four times, and secure temporarily using foil tape.

Secure using stainless steel cable ties at 25 mm from both ends and then at nominal 100 mm centres.

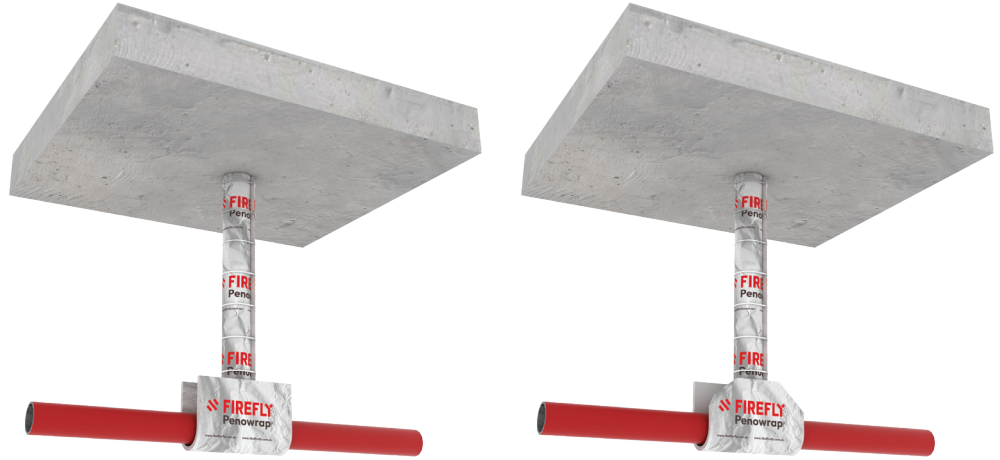
Step 5

Take a 300 mm wide piece of FIREFLY Penowrap and cut using a sharp blade such that it wraps around the steel clamp and pipe and overlaps onto the wrapped, threaded rod by a minimum of 100 mm.



Step 6

Shape and fold the corners neatly and secure temporarily using foil tape.

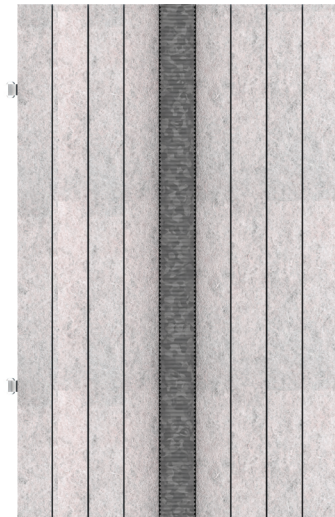


Step 7

Secure 100 mm overlap onto the wrapped, threaded rod using 2 x stainless steel cable tiles.



Cross sectional view



Part 2 | Steel Threaded Rod (minimum 12 mm OD) and Horizontal Support System

Step 1

Wrap steel threaded rod as per instructions in Steps 1 to 4, Part 1 of this guide.



Step 2

Measure the length, width and height of the horizontal support. Cut the FIREFLY Penowrap using a long bladed knife, incorporating the following

- Total length of the wrap must cover the length of the horizontal support and allow for at least 100 mm overlap onto the threaded rod on both sides.
- Total width of the wrap must cover the width and height of the horizontal support on all sides and allow for at least 100 mm overlap onto the threaded rod on the top side.

Step 3

Fold the FIREFLY Penowrap up the sides.



Step 4

Cut, fold and manipulate to create a tidy and snug finish.

Note: The FIREFLY Penowrap must overlap on to the wrapped threaded rod by at least 100 mm.



Step 5

Secure the overlapping 100mm to the rod by 2 x steel cable ties.



Step 6

Secure the remaining FIREFLY Penowrap using stainless steel cable ties at 25 mm from the ends and at nominal 100 mm centres.



Cross sectional view

