



LORIENT

INTUMESCENT

FIRE DAMPERS

PRODUCT SELECTOR

INTU —
MESCE
FIRE
DAMPEN



LVH44+LVH44C INTUMESCENT FIRE DAMPER



INTUMESCENT FIRE DAMPERS

Manufactured for over 25 years, the original Lorient LVH44 Intumescent Fire Damper is the trusted, versatile fire containment solution.

Design needs

Sub-dividing buildings into smaller fire resisting compartments is a recognised method to limit the spread of fire. Building a fire resistant wall or floor to construct an enclosed compartment is relatively simple. However, building design becomes much more complex when the compartments need to be linked for everyday use.

Ventilation through ducting

Designers recognise the need for buildings to be well ventilated for the health and comfort of occupants. Frequent changes of air are required to flush out airborne infections, and warm and cool air needs to be circulated to maintain a comfortable temperature.

Experience has shown that ductwork can, in the event of fire, provide a conduit for fire, as well as the hot smoke and toxic gases it produces.

As HVAC systems frequently penetrate fire compartment boundaries, it is these points that must be treated in an approved manner to preserve the integrity of the fire compartment.

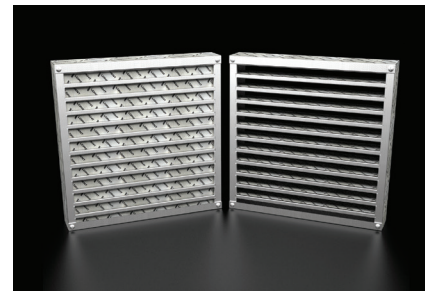
The Lorient solution is to install a LVH44 intumescent fire damper into the duct at the point where it penetrates the fire resistant construction.

This will effectively limit the spread of fire and restrict the passage of hot smoke and toxic gases.

What are intumescent fire dampers and how do they work?

The Lorient LVH44 intumescent fire damper comprises a rigid galvanised steel framework that supports a series of evenly spaced reinforced parallel slats that contain an intumescent material.

Under normal circumstances they allow air to pass freely but a sudden increase in temperature, resulting from the presence of hot flames or gases, will cause the slats to expand to many times their original thickness fusing together to form a stable fire resistant barrier, which restricts fire and limits the spread of hot smoke and toxic gases.



▲ Image: Showing Lorient Damper activated and Lorient Damper normal



AUSTRALIAN MADE

Lorient LVH44 Intumescent Fire Dampers are a recognised and well respected brand. Lorient is proud to continue to offer the LVH44 and LVH44C Intumescent Fire Dampers to the Australian and New Zealand markets.

Australian made

Manufactured in Sydney to the highest quality, Lorient intumescent fire dampers are designed and approved for use in a host of different applications, providing a range of proven versatile solutions all in accordance with the latest Australian standards – see our system selector for full details.



Reliability

Lorient intumescent fire dampers offer a rugged, reliable solid state design that unlike conventional mechanical fire dampers do not contain any moving parts.

Their symmetrical construction allows for bi-directional airflow and they are simply activated by a rise in temperature. The LVH44 fire damper produces a tightly sealed, highly insulative intumescent mass that provides a barrier to fire, and also restricts the spread of hot smoke and radiated heat.

Product identification

All Lorient intumescent fire dampers are supplied with Lorient branded foil to allow for easy identification.



LVH44 Insulating Fire Rated Air Transfer Grilles.

LVH44 Fire Rated Air Transfer Grilles

Lorient LVH44 fire rated air transfer grilles provide air transfer between compartments without the need for connecting sheet metal ductwork. They are able to provide both insulating and non-insulating performance depending upon construction requirements.

Lorient LVH44 fire rated air transfer grilles are tested and approved to Section 10 of AS1530.4 2014 and offer designers, specifiers and mechanical consultants a simple and compliant air transfer solution.

System features include

Lorient intumescent fire dampers offer a rugged, reliable solid state design, that unlike conventional mechanical fire dampers do not contain any moving parts.

Tested and approved in accordance with the very latest standards they offer designers, specifiers and mechanical contractors a simple and compliant fire damper solution.



LVH44

SQUARE / RECTANGULAR MODULES / UP TO 240MM X 1200MM

FEATURES

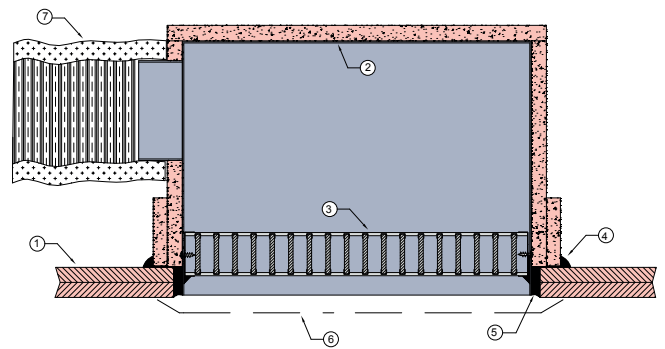
- ▶ Allows free airflow at ambient conditions to provide up to 240 minutes fire resistance and limits the speed of hot smoke.
- ▶ Low maintenance.
- ▶ Slim-line, heavy steel construction.
- ▶ No moving parts.

CEILING MODULE 1

Lorient LVH44 Intumescent Fire Damper installed in a ceiling.

Fire resistance in accordance with AS1530.4 2014. 90 minutes fire resistance with 60 minutes resistance to the incipient spread of flame.

CODE	NECK SIZE	HEIGHT	SPIGOT
C1-BOX 150	150 x 150mm	250mm	125mm
C1-BOX 200	200 x 200mm	300mm	150mm
C1-BOX 250	250 x 250mm	350mm	200mm
C1-BOX 300	300 x 300mm	400mm	250mm
C1-BOX 350	350 x 350mm	450mm	300mm
C1-BOX 400	400 x 400mm	500mm	350mm
C1-BOX 450	450 x 450mm	500mm	400mm
C1-BOX 500	500 x 500mm	500mm	400mm



▲ Ceiling module 1

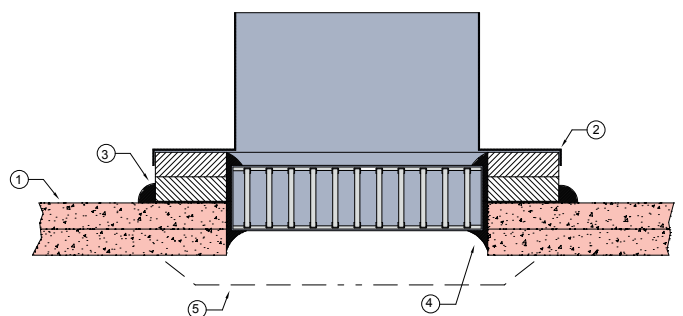
CEILING MODULE 3

Lorient LVH44C Intumescent Fire Damper installed in a ceiling.

250 x 250mm fire rated pad with 150mm LVH44C damper & 150mm diameter neck adaptor.

Max cell size: 150mm diameter.

Fire resistance in accordance with AS1530.4 2014. 90 minutes fire resistance with 60 minutes resistance to the incipient spread of flame.



▲ Ceiling module 3

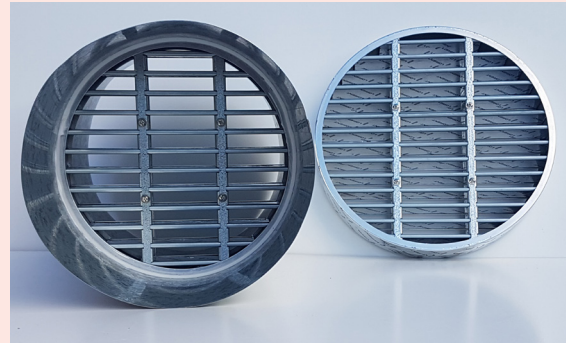
LVH44C

CIRCULAR MODULES - UP TO 450MM DIAMETER

LVH44C circular dampers are supplied pre-installed in a round 360mm long sheet metal casing with fixing brackets.

KEY BENEFITS

- ▶ Cost effective solution.
- ▶ Easy installation.
- ▶ No moving parts



LVH DOOR GRILLES

DOOR GRILLE KITS - UP TO 600 X 600MM

Heavy duty intumescent air transfer grille designed for use in fire door assemblies where air transfer or additional air ventilation is required.

KEY BENEFITS

- ▶ Allows free airflow at ambient temperatures.
- ▶ When exposed to fire or elevated temperatures the intumescent slats swell to create a physical barrier that provides up to 240 minutes fire resistance.
- ▶ No moving parts.

APPROVALS

Fire tested in accordance with AS1530.4 2014 and approved for use on major AS1905.1 propriety fire door types for up to 4 hours resistance.

Supplied as complete kits including two steel cover grilles, fixings and a tube of Lorient Intumescent sealant.

CODE	DIMENSIONS
LVH-Door 3030	300 x 300mm
LVH-Door 6030	600 x 300mm
LVH-Door 4545	450 x 450mm
LVH-Door 6060	600 x 600mm

INTUMESCENT SEALANT

Lorient intumescent sealant is an integral part of Lorient's approved intumescent fire damper systems.



LORIENT LVH INTUMESCENT FIRE DAMPER SYSTEM SELECTOR

	System Number	Building Element	Product	Max Size
MASONRY + CONCRETE	Wall 1	Masonry or Concrete wall	LVH44	Up to 1.2m x 2.4m (2.8sqm)
	Wall 2	Masonry or Concrete wall	LVH44	Up to 1.2m x 2.4m (2.8sqm)
	Wall 3	Masonry or Concrete wall	LVH44	Up to 1.2m x 2.4m (2.8sqm)
	Wall 4	Masonry or Concrete wall	LVH44	Up to 1.2m x 2.4m (2.8sqm)
	Wall 5	Masonry or Concrete wall	LVH44	Up to 1.2m x 2.4m (2.8sqm)
	Wall 6	Masonry or Concrete wall	LVH44C Circular	Up to 450mm diameter
	Wall 7	CSR Hebel® wall	LVH44	450mm x 450mm
	Wall 8	CSR Hebel® wall	LVH44	450mm x 450mm
	Wall 9	CSR Hebel® wall	LVH44C Circular	Up to 450mm diameter
	Wall 10	CSR Hebel® wall	LVH44	450mm x 450mm
	Wall 11	CSR Hebel® wall	LVH44C Circular	Up to 450mm diameter
	Wall 12	CSR Hebel® wall	LVH44	450mm x 450mm
FIRE RATED PLASTERBOARD	Stud Wall 1	FR Plasterboard steel stud wall	LVH44C Circular	Up to 450mm diameter
	Stud Wall 2	FR Plasterboard steel stud wall	LVH44	450mm x 450mm
	Stud Wall 3	FR Plasterboard steel stud wall	LVH44	450mm x 450mm
	Stud Wall 4	FR Plasterboard steel stud wall	LVH44C Circular	Up to 450mm diameter
	Stud Wall 5	FR Plasterboard steel stud wall	LVH44	450mm x 450mm
	Stud Wall 6	FR Plasterboard steel stud wall	LVH44C Circular	Up to 450mm diameter
	Stud Wall 7	FR Plasterboard steel stud wall	LVH44C Circular	Up to 450mm diameter
	Stud Wall 8	FR Plasterboard steel stud wall	LVH44	600mm x 600mm
	Stud Wall 9	FR Plasterboard steel stud wall	LVH44	600mm x 600mm
	Stud Wall 10	FR Plasterboard steel stud wall	LVH44	600mm x 600mm
	Stud Wall 11	FR Plasterboard steel stud wall	LVH44	600mm x 600mm
	Stud Wall 12	FR Plasterboard steel stud wall	LVH44	600mm x 600mm
	Stud Wall 13	FR Plasterboard steel stud wall	LVH44	600mm x 600mm
	Stud Wall 14	FR Plasterboard timber stud wall	LVH44	450mm x 450mm
	Stud wall 15	FR Plasterboard timber stud wall	LVH44	450mm x 450mm
	Stud wall 16	FR Plasterboard timber stud wall	LVH44	450mm x 450mm
	Stud Wall 17	FR Plasterboard timber stud wall	LVH44	450mm x 450mm
	Stud Wall 18	FR Plasterboard steel stud wall	LVH44	450mm x 450mm
	Stud Wall 19	FR Plasterboard steel stud wall	LVH44	450mm x 450mm
	Stud Wall 20	FR Plasterboard steel stud wall	LVH44	450mm x 450mm
SHAFT	Shaft Wall 1	FR Plasterboard riser shaft wall	LVH44	600mm x 600mm
	Shaft Wall 2	FR Plasterboard riser shaft wall	LVH44	600mm x 600mm
	Shaft Wall 3	FR Plasterboard riser shaft wall	LVH44	600mm x 600mm
	Shaft Wall 4	FR Plasterboard laminated shaft wall	LVH44	450mm x 450mm
	Shaft Wall 5	FR Plasterboard laminated shaft wall	LVHC Circular	Up to 450mm diameter

NOTE Mechanical Services Engineers, Specifiers and Certifiers should always request access to manufacturers' primary fire test approvals and satisfy themselves that these relate to the products they are specifying or certifying.

Lorient **DOES NOT** endorse the use of test reports which reference Lorient intumescent fire dampers being used to support the certification of other manufacturers' intumescent fire damper products.

FRL	System Detail	Approval Reference	Relevant Standard
Up to -/120/60	In duct angles both sides	CSIRO FCO 3127	AS1530.4 2014
Up to -/120/60	In duct angles one side	CSIRO FCO 3127	AS1530.4 2014
Up to -/120/60	In duct terminating with wall grille	CSIRO FCO 3127	AS1530.4 2014
Up to -/120/60	In duct tight to slab	CSIRO FCO 3127	AS1530.4 2014
Up to -/120/60	In duct tight to adjacent wall	CSIRO FCO 3127	AS1530.4 2014
Up to -/120/60	In duct angles one side	EXOVA EWFA 33233400	AS1530.4 2014
Up to -/120/60	In duct angles both sides	EXOVA EWFA 33233400	AS1530.4 2014
Up to -/120/60	In duct angles one side	EXOVA EWFA 33233400	AS1530.4 2014
Up to -/120/60	In duct angles one side	EXOVA EWFA 33233400	AS1530.4 2014
Up to -/120/60	In duct angle to one side	EXOVA EWFA 33233400	AS1530.4 2014
Up to -/120/60	In duct angles one side	EXOVA EWFA 33233400	AS1530.4 2014
Up to -/120/60	Duct to duct - tight to slab	EXOVA EWFA 33233400	AS1530.4 2014
-/60/60	13mm + 13mm steel stud wall	EXOVA EWFA 33233400	AS1530.4 2014
-/60/60	13mm + 13mm steel stud wall	EXOVA EWFA 33233400	AS1530.4 2014
-/90/60	16mm + 16mm steel stud wall	EXOVA EWFA 33233400	AS1530.4 2014
-/90/60	16mm + 16mm steel stud wall	EXOVA EWFA 33233400	AS1530.4 2014
-/120/60	2 x 13mm + 2 x 13mm steel stud wall	EXOVA EWFA 33233400	AS1530.4 2014
-/120/60	2 x 13mm + 2 x 13mm steel stud wall	EXOVA EWFA 33233400	AS1530.4 2014
-/120/60	2 x 16mm + 2 x 16mm steel stud wall	EXOVA EWFA 33233400	AS1530.4 2014
-/60/-	13mm + 13mm steel stud wall	CSIRO FCO 3149	AS1530.4 2014
-/90/-	2 x 13mm + 13mm steel stud wall	CSIRO FCO 3149	AS1530.4 2014
-/120/-	2 x 13mm + 2 x 13mm steel stud wall	CSIRO FCO 3149	AS1530.4 2014
-/90/-	16mm + 16mm steel stud wall	CSIRO FCO 3149	AS1530.4 2014
-/120/-	1 x 16mm + 2 x 16mm steel stud wall	CSIRO FCO 3149	AS1530.4 2014
-/120/-	2 x 16mm + 2 x 16mm steel stud wall	CSIRO FCO 3149	AS1530.4 2014
-/60/60	13mm + 13mm timber stud wall	EXOVA EWFA 33233400	AS1530.4 2014
-/90/60	16mm + 16mm timber stud wall	EXOVA EWFA 33233400	AS1530.4 2014
-/120/60	2 x 13mm + 2 x 13mm timber stud wall	EXOVA EWFA 33233400	AS1530.4 2014
-/120/60	2 x 16mm + 2 x 16mm timber stud wall	EXOVA EWFA 33233400	AS1530.4 2014
-/60/60	13mm + 13mm steel stud wall	EXOVA EWFA 33233400	AS1530.4 2014
-90/60	16mm + 16mm steel stud wall	EXOVA EWFA 33233400	AS1530.4 2014
-/120/60	2 x 13m or 2 x 16mm steel stud wall	EXOVA EWFA 33233400	AS1530.4 2014
Up to -/120/-	25mm shaft wall liner + 16mm FR plasterboard	CSIRO FCO 3149	AS1530.4 2014
Up to -/120/-	25mm shaft wall liner + 2 x16mm FR plasterboard	CSIRO FCO 3149	AS1530.4 2014
Up to -/120/-	25mm shaft wall liner + 2 x13mm FR plasterboard	CSIRO FCO 3149	AS1530.4 2014
Up to -/120/-	3 x 13mm or 3 x 16mm laminated FR plasterboard	EXOVA EWFA 33233400	AS1530.4 2014
Up to -/120/-	3 x 13mm or 3 x 16mm laminated FR plasterboard	EXOVA EWFA 33233400	AS1530.4 2014

MASONRY + CONCRETE

FIRE RATED PLASTERBOARD

SHAFT

LORIENT LVH INTUMESCENT FIRE DAMPER SYSTEM SELECTOR

	System Number	Building Element	Product	Max Size
ANGLE FREE SYSTEMS	Angle Free 1	Masonry or concrete wall minimum 90mm thick	LVH44 or LVHC44 Circular	450mm x 450mm or 450mm diameter
	Angle Free 2	Hebel® wall minimum 75mm thick	LVH44 or LVHC44 Circular	450mm x 450mm or 450mm diameter
	Angle Free 3	FR Plasterboard wall	LVH44	450mm x 450mm
	Angle Free 4	FR Plasterboard wall	LVH44	450mm x 450mm
	Angle Free 5	FR Plasterboard wall	LVH44	450mm x 450mm
	Angle Free 6	FR laminated plasterboard wall	LVH44	450mm x 450mm
	Angle Free 7	FR Plasterboard wall	LVH44	450mm x 450mm
	Angle Free 8	Masonry or concrete wall minimum 90mm thick	LVH44	450mm x 450mm
	Angle Free 9	Hebel® wall minimum 75mm thick	LVH44	450mm x 450mm
	Angle Free 10	FR Plasterboard wall	LVH44	450mm x 450mm
	Angle Free 11	FR Plasterboard wall	LVH44	450mm x 450mm
	Angle Free 12	FR Plasterboard shaft wall	LVH44	450mm x 450mm
	Angle Free 13	FR Plasterboard laminated shaft wall	LVH44	450mm x 450mm
	Angle Free 14	25mm shaft wall liner	LVH44	450mm x 450mm
SPEEDPANEL®	Speedpanel® Wall 1	51mm, 64mm, 78mm Speedpanel® wall	LVH44	1000mm x 1000mm
	Speedpanel® Wall 2	51mm, 64mm, 78mm Speedpanel® wall	LVH44	450mm x 450mm
	Speedpanel® Wall 3	51mm, 64mm, 78mm Speedpanel® wall	LVH44	450mm x 450mm
	Speedpanel® Wall 4	51mm, 64mm, 78mm Speedpanel® wall	LVH44C Circular	Up to 450mm diameter
	Speedpanel® Wall 5	51mm, 64mm, 78mm Speedpanel® wall	LVH44	450mm x 450mm
PRONTO PANEL™	Pronto Panel™ 1	LVH44 penetrating Pronto Panel™ wall system	LVH44	450mm x 450mm
	Pronto Panel™ 2	LVH44C penetrating Pronto Panel™ wall system	LVH44C Circular	Up to 450mm diameter
	Pronto Panel™ 3	LVH44 penetrating Pronto Panel™ wall system	LVH44	450mm x 450mm
	Pronto Panel™ 4	LVH44C penetrating Pronto Panel™ wall system	LVH44C Circular	Up to 450mm diameter
	Pronto Panel™ 5	LVH44 penetrating Pronto Panel™ wall system	LVH44	450mm x 450mm
	Pronto Panel™ 6	LVH44C penetrating Pronto Panel™ wall system	LVHC44	Up to 450mm diameter
	Pronto Panel™ 7	LVH44 angle free system in Pronto Panel™ wall system	LVH44	450mm x 450mm
	Pronto Panel™ 8	LVH44 duct to duct tight to slab in Pronto Panel™ wall system	LVH44	450mm x 450mm
	Pronto Panel™ 9	LVH44C angle free system in Pronto Panel™ wall system 60	LVHC44	Up to 450mm diameter

NOTE Mechanical Services Engineers, Specifiers and Certifiers should always request access to manufacturers' primary fire test approvals and satisfy themselves that these relate to the products they are specifying or certifying.

Lorient **DOES NOT** endorse the use of test reports which reference Lorient intumescent fire dampers being used to support the certification of other manufacturers' intumescent fire damper products.

FRL	System Detail	Approval Reference	Relevant Standard
Up to -/120/60	FR masonry or concrete shaft wall	EXOVA EWFA 33233400	AS1530.4 2014
Up to -/120/60	FR Hebel® shaft wall	EXOVA EWFA 33233400	AS1530.4 2014
-/60/60	13mm FR plasterboard shaft wall	EXOVA EWFA 33233400	AS1530.4 2014
Up to -/90/60	16mm FR plasterboard shaft wall	EXOVA EWFA 33233400	AS1530.4 2014
Up to -/120/60	13mm or 16mm FR plasterboard shaft wall	EXOVA EWFA 33233400	AS1530.4 2014
Up to -/120/-	25mm FR plasterboard shaft wall liner	EXOVA EWFA 33233400	AS1530.4 2014
Up to -/90/60 or Up to -/120/60	FR plasterboard shaft wall	EXOVA EWFA 33233400	AS1530.4 2014
Up to -/120/60	FR masonry or concrete shaft wall	EXOVA EWFA 33233400	AS1530.4 2014
Up to -/120/60	FR Hebel® shaft wall	EXOVA EWFA 33233400	AS1530.4 2014
-/60/60	13mm FR plasterboard shaft wall	EXOVA EWFA 33233400	AS1530.4 2014
Up to -/90/60	16mm FR plasterboard shaft wall	EXOVA EWFA 33233400	AS1530.4 2014
Up to -/120/60	13mm or 16mm FR plasterboard shaft wall	EXOVA EWFA 33233400	AS1530.4 2014
Up to -/120/-	13mm or 16mm FR laminated plasterboard shaft wall	EXOVA EWFA 33233400	AS1530.4 2014
Up to -/120/60	25mm shaft wall liner + 13mm or 16mm FR plasterboard	EXOVA EWFA 33233400	AS1530.4 2014
Up to -/120/-	General installation detail	EXOVA EWFA RIR 21622-24	AS1530.4 2005
Up to -/120/30	In duct angles both sides	EXOVA EWFA 33233400	AS1530.4 2014
Up to -/120/30	In duct angles one side	EXOVA EWFA 33233400	AS1530.4 2014
Up to -/120/60	In duct angles one side	EXOVA EWFA 33233400	AS1530.4 2014
Up to -/120/30	Mounted in wall with eggcrate cover grille	EXOVA EWFA 33090200	AS1530.4 2005
Up to -60/60	In duct angles both sides	EXOVA EWFA 33233400	AS1530.4 2014
Up to -/120/60	In duct angles one side	EXOVA EWFA 33233400	AS1530.4 2014
Up to -/120/60	In duct angles both sides	EXOVA EWFA 33233400	AS1530.4 2014
Up to -/120/60	In duct angles one side	EXOVA EWFA 33233400	AS1530.4 2014
Up to -/120/60	Fitted tight to slab duct to duct	EXOVA EWFA 33233400	AS1530.4 2014
Up to -/120/60	In duct angles to one side	EXOVA EWFA 33233400	AS1530.4 2014
Up to -/120/60	Attached to riser angles one side	EXOVA EWFA 33233400	AS1530.4 2014
Up to -/120/60	Fitted tight to slab - duct to duct	EXOVA EWFA 33233400	AS1530.4 2014
Up to -/120/60	Attached to riser angles one side	EXOVA EWFA 33233400	AS1530.4 2014

ANGLE FREE SYSTEMS

SPEEDPANEL®

PRONTO PANEL™

LORIENT LVH INTUMESCENT FIRE DAMPER SYSTEM SELECTOR

	System Number	Building Element	Product	Max Size
XLAM	Xlam CLT Wall 1	Cross laminated timber wall	LVH44	Not to exceed 0.2m ²
	Xlam CLT Wall 2	Cross laminated timber wall	LVH44	Not to exceed 0.2m ²
TBA FIREFLY INTUBATT	TBA Firefly Intubatt 1	Masonry, Concrete or Hebel® wall	LVH44	450mm x 450mm
	TBA Firefly Intubatt 2	Masonry, Concrete or Hebel® wall	LVH44	450mm x 450mm
	TBA Firefly Intubatt 3	FR Plasterboard stud wall	LVH44	450mm x 450mm
	TBA Firefly Intubatt 4	FR Plasterboard stud wall	LVH44	450mm x 450mm
	TBA Firefly Intubatt 5	FR Plasterboard stud wall	LVH44	450mm x 450mm
	TBA Firefly Intubatt 6	Speedpanel® wall	LVH44	450mm x 450mm
PROMAT	Promat Wall 1	PROMASIL® 1100	LVH44	800mm x 800mm
	Promat Wall 2	PROMASIL® 1100	LVH44	800mm x 800mm
CEILING	Ceiling 1	60/60/60 RISF Plasterboard ceiling	LVH44	500mm x 500mm
	Ceiling 2	60/60/60 RISF Plasterboard ceiling	LVH44	450mm x 450mm
	Ceiling 3	60/60/60 RISF Plasterboard ceiling	LVH44C Circular	150mm diameter
FIRE RATED AIR TRANSFER GRILLES	FR Air Transfer Grille Wall 1	Masonry or concrete walls	LVH44	1200mm x 2400mm
	FR Air Transfer Grille Wall 2	CSR Hebel® wall	LVH44	1200mm x 2400mm
	FR Air Transfer Grille Wall 3	Pronto Panel™	LVH44	1200mm x 2400mm
	FR Air Transfer Grille Wall 4	Masonry or concrete walls	LVH44	1200mm x 2400mm
	FR Air Transfer Grille Wall 5	CSR Hebel® wall	LVH44	1200mm x 2400mm
	FR Air Transfer Grille Wall 6	Speedpanel®	LVH44	1200mm x 2400mm
	FR Air Transfer Grille Wall 7	Pronto Panel™	LVH44	1200mm x 2400mm
	FR Air Transfer Grille Wall 8	Masonry or concrete walls	LVH44	Max aperture size: 1000mm x 500mm
	FR Air Transfer Grille Wall 9	CSR Hebel® wall	LVH44	Max aperture size: 1000mm x 500mm
	FR Air Transfer Grille Wall 10	Pronto Panel™	LVH44	Max aperture size: 1000mm x 500mm
	FR Air Transfer Grille Wall 11	Pronto Panel™	LVH44	1000mm x 500mm
VENTILATION GRILLES	Fire Door 1	E-core® fire doors	LVH-Door	600mm x 300mm, 450mm x 450mm, 300mm x 300mm
	Fire Door 2	Firecore TVC fire doors	LVH-Door	600mm x 300mm, 450mm x 450mm, 300mm x 300mm
	Fire Door 3	Pyropanel® FR & Pandor fire doors	LVH-Door	600mm x 600mm, 600mm x 300mm, 450mm x 450mm, 300mm x 300mm

NOTE Mechanical Services Engineers, Specifiers and Certifiers should always request access to manufacturers' primary fire test approvals and satisfy themselves that these relate to the products they are specifying or certifying.

Lorient **DOES NOT** endorse the use of test reports which reference Lorient intumescent fire dampers being used to support the certification of other manufacturers' intumescent fire damper products.

FRL	System Detail	Approval Reference	Relevant Standard
Up to -/120/60	13mm or 16mm FR plasterboard	CSIRO FCO 3300	AS1530.4 2014
Up to -/120/60	13mm or 16mm FR plasterboard	CSIRO FCO 3300	AS1530.4 2014
Up to -/120/-	Intubatt & LVH44 fitted in wall aperture	EXOVA EWFA RIR 34088500	AS1530.4 2005
Up to -/120/-	Intubatt & LVH44 overlapping wall aperture	EXOVA EWFA RIR 34088500	AS1530.4 2005
Up to -/120/-	Intubatt & LVH44 fitted in wall aperture	EXOVA EWFA RIR 34088500	AS1530.4 2005
Up to -/120/-	Intubatt & LVH44 overlapping wall aperture	EXOVA EWFA RIR 34088500	AS1530.4 2005
Up to -/120/-	Intubatt & LVH44 fitted in Intubatt lined aperture	EXOVA EWFA RIR 34088500	AS1530.4 2005
Up to -/120/-	Intubatt & LVH44 overlapping wall aperture	EXOVA EWFA RIR 34088500	AS1530.4 2005
Up to -/120/-	Mounted in PROMASIL® 1100 board	BRANZ FAR 3404, FAR 4810	AS1530.4 2005
Up to -/120/-	Mounted in PROMASIL® 1100 board	BRANZ FAR 3404, FAR 4810	AS1530.4 2005
60/60/60 RISF 60 min	Lightweight clad plenum box	BRANZ 4581	AS1530.4 2014
60/60/60 RISF 60 min	Plasterboard clad plenum box	BRANZ 4581	AS1530.4 2014
60/60/60 RISF 60 min	Ceiling installation suitable for in-line fans	BRANZ FP5859	AS1530.4 2014
Up to -/240/120	Insulating LVH44 air transfer grille in masonry or concrete walls	EXOVA EWFA 55205900	AS1530.4 2014
Up to -/120/120	Insulating LVH44 air transfer grille CSR Hebel® walls	EXOVA EWFA 55205900	AS1530.4 2014
Up to -/120/120	Insulating LVH44 air transfer grille Pronto Panel™ walls	EXOVA EWFA 55205900	AS1530.4 2014
Up to -/240/-	Fire rated air transfer grille in masonry or concrete walls	EXOVA EWFA 55205900	AS1530.4 2014
Up to -/120/-	Fire rated air transfer grille in CSR Hebel® walls	EXOVA EWFA 55205900	AS1530.4 2014
Up to -/120/-	Fire rated air transfer grille in Speedpanel® wall	EXOVA EWFA 55205900	AS1530.4 2014
Up to -/120/-	Fire rated air transfer grille in Pronto Panel™ walls	EXOVA EWFA 55205900	AS1530.4 2014
Up to -/240/120 One direction only	Surface mounted over aperture concrete or masonry wall	EXOVA EWFA 55205900	AS1530.4 2014
Up to -/120/120 One direction only	Surface mounted over aperture CSR Hebel® wall	EXOVA EWFA 55205900	AS1530.4 2014
Up to -/120/120 One direction only	Surface mounted over aperture in Pronto Panel™ wall	EXOVA EWFA 55205900	AS1530.4 2014
Up to -/120/120 One direction only	Surface mounted over aperture in Pronto Panel™ wall	EXOVA EWFA 55205900	AS1530.4 2014
Up to -120/30	Mini & Maxi doors up to 3 grilles per leaf	BRANZ FAR 3379	AS1530.4 1990
Up to -/120/30	Mini & Maxi doors up to 1 grille per leaf	CSIRO FCO 3064	AS1530.4 1990
Up to -/240/30	Mini & Maxi doors up to 3 grilles per leaf	EXOVA EWFA 27704400	AS1530.4 2005

XLAM

TBA FIREFLY INTUBATT

PROMAT

CEILING

FIRE RATED AIR TRANSFER GRILLES

VENTILATION GRILLES

COMPREHENSIVE SUPPORT

We continue to lead the way in research and development; as a company we have over 40 years' experience, so our experts are well equipped to listen, help and advise you on your acoustic, smoke and fire containment needs.

Technical Service + Customer Support

By keeping abreast of technical developments and changes to codes, regulations and standards we can ensure we're always providing the highest level of expertise.

A trusted source for advice – we offer prompt service and comprehensive technical support for the design, specification and installation of our LVH44 fire dampers.

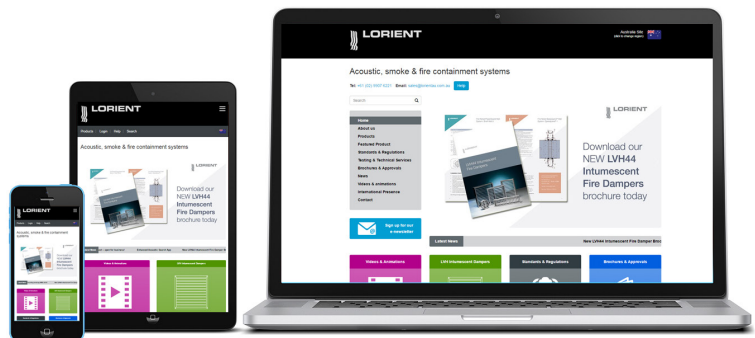


Call our Sales Team who are well equipped to listen, help and advise you on any queries you may have.

+61 (02) 9905 0868
sales@lorientau.com.au

www.lorient.com.au

Please note: Recommendations as to methods, use of materials and construction details are based on the experience and knowledge of Lorient and are given in good faith as a general guide and service to designers, contractors and manufacturers. Lorient reserves the right to make alterations or delete installation detail without prior notice. Installers must ensure that installation details are fully complied with to ensure installations fulfil the requirements of relevant test approvals.





LORIENT PTY LTD

Unit 30
9 Powells Road
Brookvale 2100
New South Wales
Australia

T: +61 (02) 9905 0868
F: +61 (02) 9905 0883
E: sales@lorientau.com.au

For further information about
Lorient products please visit:
www.lorientgroup.com



@LorientUK



/company/lorient



@lorientuk



/LorientPolyproducts

ASSA ABLOY

An ASSA ABLOY Group Brand