

FIREFLYBatt Seals Systems Update

FIREFLYBatt Seals Report FAS190234 RIR 1.9

Welcome to the latest edition of our new systems update. In this update, we are pleased to introduce the latest fire stopping system additions to our report, with a focus on the FAS190234 report.

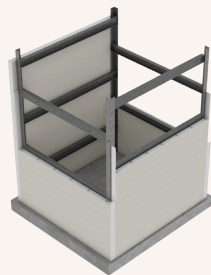
We acknowledge that it has been a while since our last update, but we assure you that it was worth the wait. Get ready for some remarkable new systems that will undoubtedly impress.

FIREFLYBatt Risers | 1 x 50 mm FIREFLYBatt

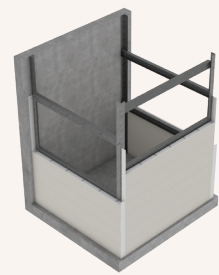
Builders and trade professionals can now utilise the versatile FIREFLYBatt to construct fire-rated risers with up to -/90/90 FRL using just one layer of FIREFLYBatt. Risers can span from floor to soffit, up to a maximum of four metres in height, while being supported by a fire-rated wall on either one, two or three sides. Alternatively they can be self-supported using a skeletal frame of studs and angles for four-sided coverage. 90-minute risers require a coating of FIREFLYMastic on one side of the FIREFLYBatt whereas 60-minute risers do not require any coating.

This new solution offers flexibility and ease of installation, making fire-rated risers more accessible for a variety of construction applications.

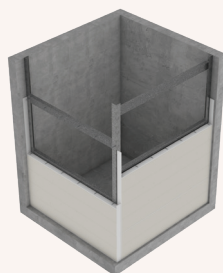
V137A | -/90/90



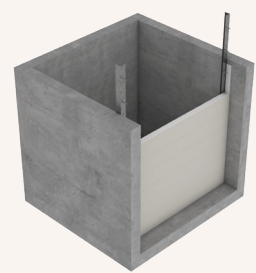
V138B | -/60/60



V139B | -/60/60



H140A | -/90/90



Kingspan K-Roc wall | Aperture Seals & Linear Gap Seals

We are excited to announce the inclusion of Kingspan K-Roc walls in the FAS190234 report. With a high insulation value and modular nature facilitating flexible layout configurations, this wall system is exceedingly popular in data centres, making our partnership with Kingspan a natural choice.

Various aperture seals for openings through Kingspan K-Roc walls, up to 1200 mm x 600 mm, can now be sealed using two layers of FIREFLYBatt.

For aperture seals, solutions are now available in the following configurations:

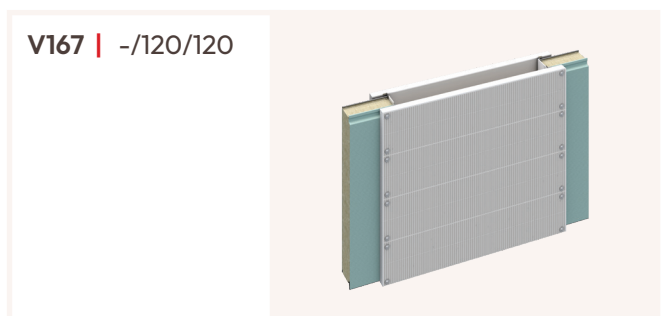
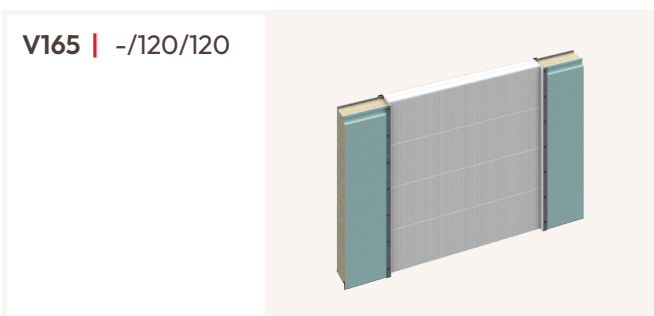
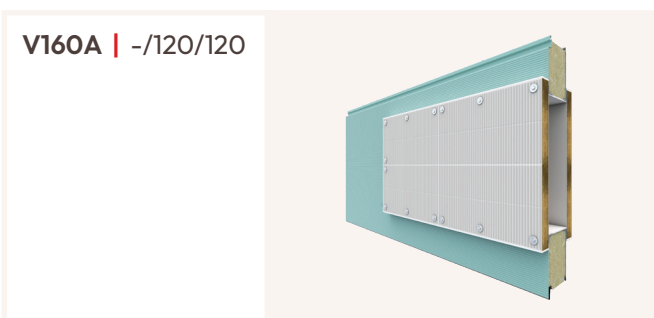
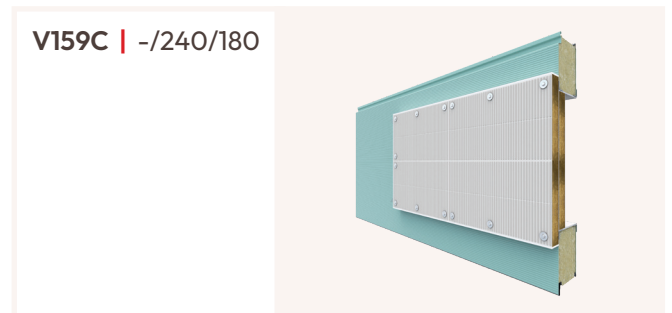
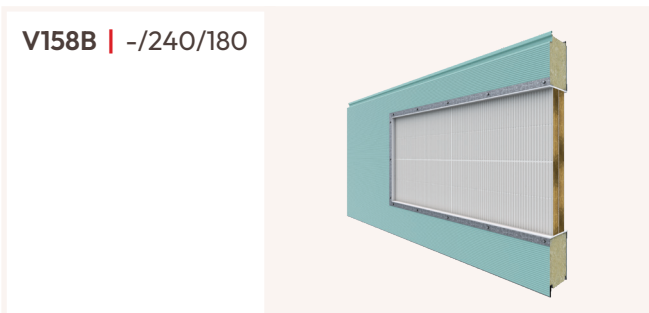
- Friction fit
- One in and one out
- Pattress on each side
- Double pattress from one side

These solutions provide Fire Resistance Levels (FRLs) of up to -/240/180, catering to different Kingspan K-Roc panel types.

Linear gap seals are available in the following configurations:

- Friction fit
- One in and one out
- Pattress on each side

FRLs of up to -/120/120 are covered with the above. Horizontal linear gap seals can accommodate gaps up to 1200 mm in height. Vertical linear gap seals can cover the same distance in width. Additionally, vertical linear gap seals can be used where Kingspan K-Roc wall abuts a rigid wall of any kind. The overall FRL will be determined by the lower FRL of the two fire-rated elements.



Korok walls | Aperture Seals & horizontal Linear Gap Seals

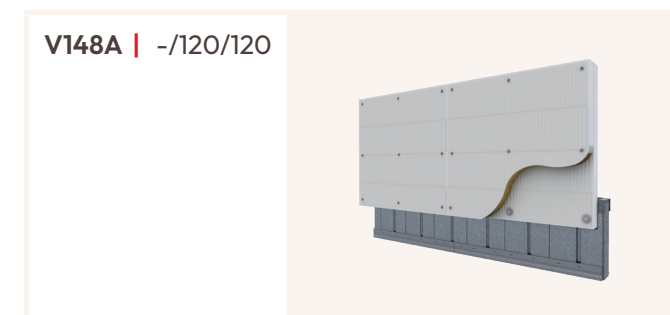
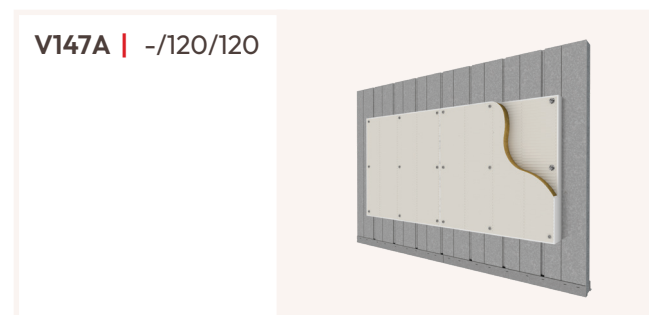
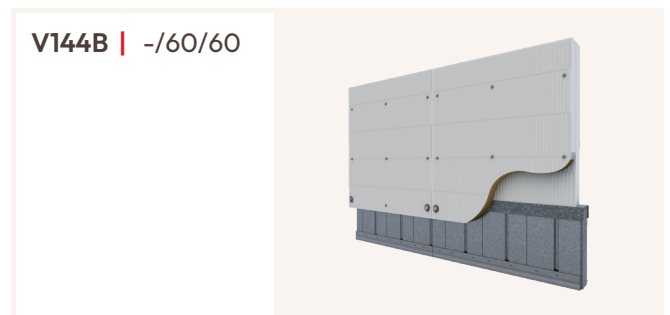
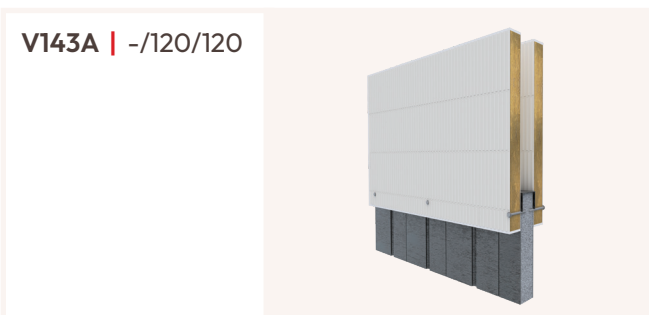
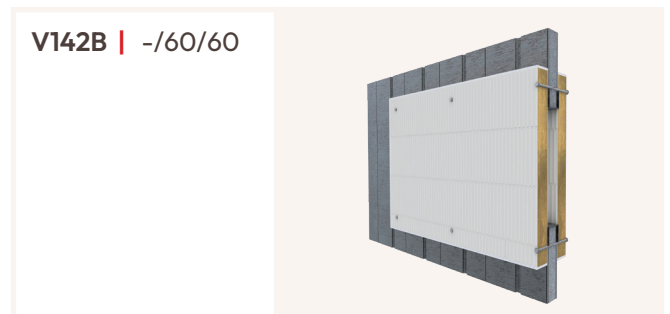
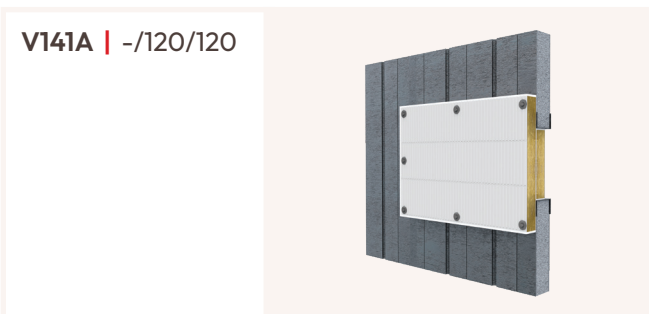
We are equally pleased to announce that KOROK wall systems are now included in the FAS190234 report.

KOROK wall, a steel shell filled with aerated concrete, is widely used by builders in New Zealand. Fire stopping professions can now be assured that FIREFLY provides certified solutions for sealing services and openings through it.

Aperture seal solutions using single or double layers of FIREFLYBatt are available for openings up to 2400 mm x 1000 mm. Both 78 mm and 51 mm KOROK panels are addressed, offering solutions for -/120/120 FRL (78 mm panels) and -/60/60 (51 mm panels).

Horizontal linear gap seals are available in the following configurations, expanding our range of solutions:

- Friction fit
- One in and one out
- Pattress on each side
- Double pattress from one side



Plasterboard walls | Aperture Seals

Announcing our groundbreaking system that allows you to say goodbye to the hassle of reinforcing an opening in a plasterboard wall with metals studs and tracks to maintain fire resistance!

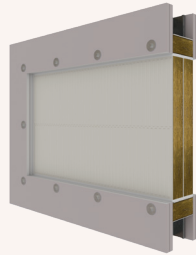
In our latest testing FIREFLYBatt has proven to effectively replace traditional metal framing around openings, maintaining the FRL of the wall for the same duration and delivering results comparable to metal reinforcements.

This innovative system simplifies fire stopping in plasterboard walls, offering a faster, more efficient installation whilst maintaining full compliance.

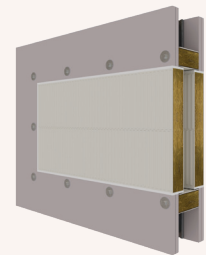
Key benefits for you:

- Say goodbye to metal studs and tracks - FIREFLYBatt does the job
- All aperture seals in plasterboard walls are now covered by this system
- Single side application systems V150, V151, V153, V155 & V157 significantly cut both labour costs and installation time
- Traditional methods are still available if preferred, with existing ID's remaining available for your use

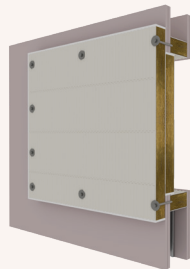
V150A | -/120/120



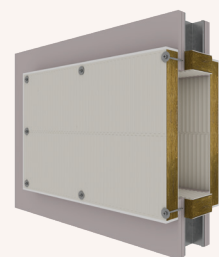
V150B | -/120/120



V151 | -/120/120



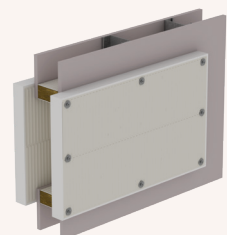
V152 | -/120/120



V155 | -/60/60



V156 | -/90/90



Single FIREFLYBatt Seals | Service Penetrations

Quoting for projects with access restricted to one side of the wall, like corridor walls in high rise residential buildings with 60 and 90 minute FRLs, is now possible.

In FAST190234 RIR 1.8, we introduced single-layer FIREFLYBatt aperture seals for blank seals only. Now we are enhancing this by providing a solution for service penetrations through these single batt seals.

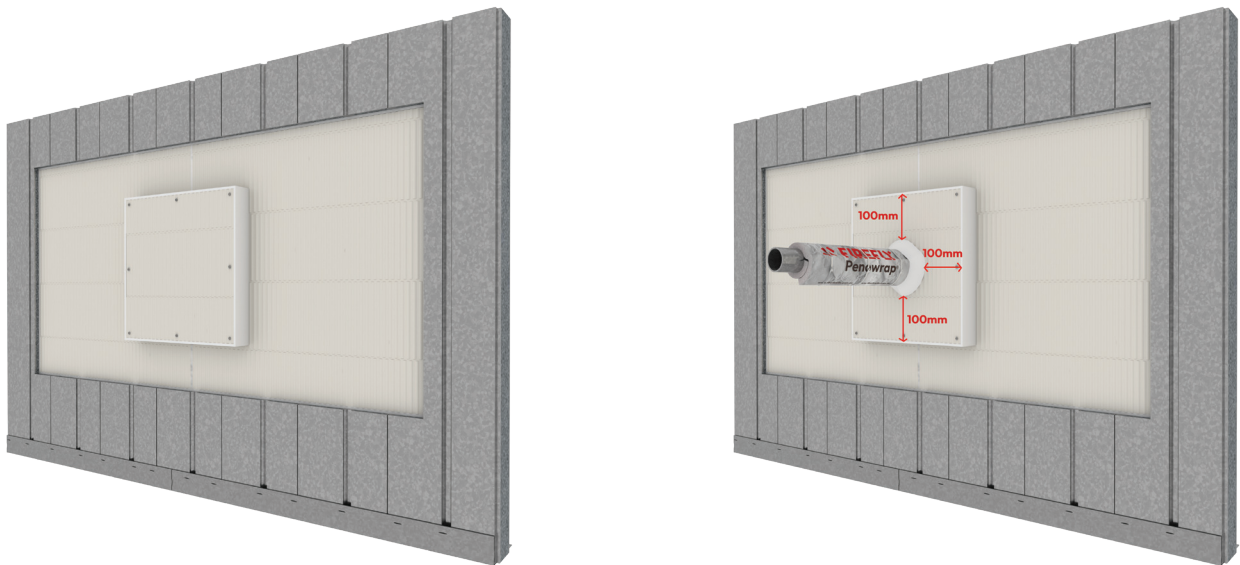
By combining our latest update with hundreds of wrap-free solutions for services through FIREFLYBatt in our FAST190235 report, we may soon eliminate the hassle of scheduling and coordinating access with unit occupiers.

To pass a service through an existing blank 1 x 50 mm FIREFLYBatt seal, simply:

1. Pattern fit a second layer of FIREFLYBatt using pigtail screws
2. Ensure a minimum 100 mm overlap from the fire stopping component in use (eg FIREFLYMastic, FIREFLYMastic HP or FIREFLY Penowrap).

This enhancement allows users to leverage hundreds of solutions from our FAST190235 report through FIREFLYBatt services, providing greater flexibility and efficiency in fire-stopping.

Refer to the below illustrations for a clearer understanding of the concept or discuss with your FIREFLY Account Manager.



See overleaf for complete list of new systems available in this update.

FAS190234 RIR 1.9 | New Systems

ID	Seal type	Local FIREFLY protection	FRL
V137A	Vertical riser – 4 sides	1 x 50mm FIREFLYBatt + FIREFLYMastic coating	90/90/90
V137B	Vertical riser – 4 sides	1 x 50mm FIREFLYBatt	60/60/60
V138A	Vertical riser – 3 sides	1 x 50mm FIREFLYBatt + FIREFLYMastic coating	90/90/90
V138B	Vertical riser – 3 sides	1 x 50mm FIREFLYBatt	60/60/60
V139A	Vertical riser – 2 sides	1 x 50mm FIREFLYBatt + FIREFLYMastic coating	90/90/90
V139B	Vertical riser – 2 sides	1 x 50mm FIREFLYBatt	60/60/60
V140A	Vertical riser – 1 side	1 x 50mm FIREFLYBatt + FIREFLYMastic coating	90/90/90
V140B	Vertical riser – 1 side	1 x 50mm FIREFLYBatt	60/60/60
V141A	Aperture seal – Korok wall	2 x 50mm FIREFLYBatt	-/120/120
V141B	Aperture seal – Korok wall	2 x 50mm FIREFLYBatt	-/60/60
V142A	Aperture seal – Korok wall	2 x 50mm FIREFLYBatt	-/120/120
V142B	Aperture seal – Korok wall	2 x 50mm FIREFLYBatt	-/60/60
V143A	Horizontal linear gap seal – Korok wall	2 x 50mm FIREFLYBatt	-/120/120
V143B	Horizontal linear gap seal – Korok wall	2 x 50mm FIREFLYBatt	-/60/60
V144A	Horizontal linear gap seal – Korok wall	2 x 50mm FIREFLYBatt	-/120/120
V144B	Horizontal linear gap seal – Korok wall	2 x 50mm FIREFLYBatt	-/60/60
V145	Aperture seal – Korok wall	1 x 50mm FIREFLYBatt + FIREFLYMastic coating	-/120/120
V146	Aperture seal – Korok wall	1 x 50mm FIREFLYBatt + FIREFLYMastic coating	-/60/60
V147A	Aperture seal – Korok wall	2 x 50mm FIREFLYBatt	-/120/120
V147B	Aperture seal – Korok wall	2 x 50mm FIREFLYBatt	-/60/60
V148A	Horizontal linear gap seal – Korok wall	2 x 50mm FIREFLYBatt with staggered joint	-/120/120
V148B	Horizontal linear gap seal – Korok wall	2 x 50mm FIREFLYBatt with staggered joint	-/60/60

ID	Seal type	Local FIREFLY protection	FRL
V149A	Horizontal linear gap seal – Korok wall	2 x 50mm FIREFLYBatt with staggered joint	-/120/120
V149B	Horizontal linear gap seal – Korok wall	2 x 50mm FIREFLYBatt with staggered joint	-/60/60
V150	Aperture seal – Plasterboard wall (Single side application System)	2 x 50mm FIREFLYBatt + FIREFLYBatt framing	-/120/120
V151	Aperture seal – Plasterboard wall (Single side application System)	2 x 50mm FIREFLYBatt + FIREFLYBatt framing	-/120/120
V152	Aperture seal – Plasterboard wall	2 x 50mm FIREFLYBatt + FIREFLYBatt framing	-/120/120
V153	Aperture seal – Plasterboard wall (Single side application System)	2 x 50mm FIREFLYBatt + FIREFLYBatt framing	-/60/60
V154	Aperture seal – Plasterboard wall	2 x 50mm FIREFLYBatt + FIREFLYBatt framing	-/60/60
V155	Aperture seal – Plasterboard wall (Single side application System)	1 x 50mm FIREFLYBatt + FIREFLYBatt framing	-/60/60
V156	Aperture seal – Plasterboard wall	2 x 50mm FIREFLYBatt + FIREFLYBatt framing	-/90/90
V157	Aperture seal – Plasterboard wall (Single side application System)	2 x 50mm FIREFLYBatt + FIREFLYBatt framing	-/90/90
V158A	Aperture seal – Kingspan K-Roc panels	2 x 50mm FIREFLYBatt	-/120/120
V158B	Aperture seal – Kingspan K-Roc panels	2 x 50mm FIREFLYBatt	-/240/180
V158C	Aperture seal – Kingspan K-Roc panels	2 x 50mm FIREFLYBatt	-/240/180
V159A	Aperture seal – Kingspan K-Roc panels	2 x 50mm FIREFLYBatt	-/120/120
V159B	Aperture seal – Kingspan K-Roc panels	2 x 50mm FIREFLYBatt	-/240/180
V159C	Aperture seal – Kingspan K-Roc panels	2 x 50mm FIREFLYBatt	-/240/180
V160A	Aperture seal – Kingspan K-Roc panels	2 x 50mm FIREFLYBatt	-/120/120
V160B	Aperture seal – Kingspan K-Roc panels	2 x 50mm FIREFLYBatt	-/240/180
V160C	Aperture seal – Kingspan K-Roc panels	2 x 50mm FIREFLYBatt	-/240/180
V161A	Aperture seal – Kingspan K-Roc panels	2 x 50mm FIREFLYBatt	-/120/120
V161B	Aperture seal – Kingspan K-Roc panels	2 x 50mm FIREFLYBatt	-/240/180
V161C	Aperture seal – Kingspan K-Roc panels	2 x 50mm FIREFLYBatt	-/240/180

ID	Seal type	Local FIREFLY protection	FRL
V162	Horizontal linear gap seal – Kingspan K-Roc panels	2 x 50mm FIREFLYBatt	-/120/120
V163	Horizontal linear gap seal – Kingspan K-Roc panels	2 x 50mm FIREFLYBatt	-/120/120
V164	Horizontal linear gap seal – Kingspan K-Roc panels	2 x 50mm FIREFLYBatt	-/120/120
V165	Vertical linear gap seal – Kingspan K-Roc panels	2 x 50mm FIREFLYBatt	-/120/120
V166	Vertical linear gap seal – Kingspan K-Roc panels	2 x 50mm FIREFLYBatt	-/120/120
V167	Vertical linear gap seal – Kingspan K-Roc panels	2 x 50mm FIREFLYBatt	-/120/120

For further details regarding these systems sign up for FIREFLY PFP for desktop or mobile via our website <https://tbafirefly.com.au/app/> or to obtain a copy of the complete report reach out to your FIREFLY Account Manager or contact our customer service team at sales@tbafirefly.com.au