

FIREFLYCore Hole Report

Systems Overview

FAST90236 RIR 1.21A

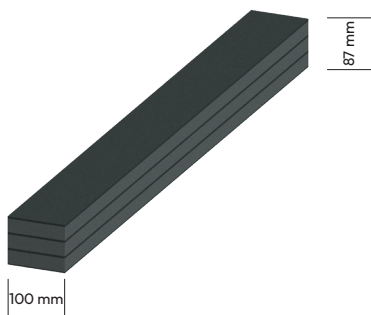
Welcome to the latest update of the FIREFLY Passive Fire Protection Newsletter. This edition focuses on our continued collaboration with Kingspan, highlighting core hole solutions that seamlessly integrate with their high-performance wall systems.

Discover the new FIREFLYSpan variants tailored for different slab thicknesses and their applications in linear gap seals in walls and floors. Learn more about how these products can address your firestopping requirements.

Linear Gap Seals | Walls & Floors

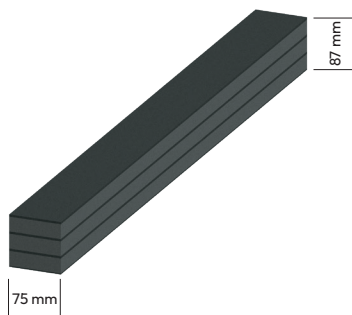
Control joints play a crucial role in modern building construction, ensuring the structural integrity and longevity of various building elements. When these joints are present in fire-rated elements, it is essential to protect them with flexible solutions that meet the Fire Resistance Level (FRL) requirements.

FIREFLYSpan offers dependable and flexible firestopping solutions that can adapt to joint movement while providing the necessary fire protection. With a range of sizes available, FIREFLYSpan is designed to suit a variety of joints, ensuring proper protection based on the thickness and FRL of the separating element. The range includes:



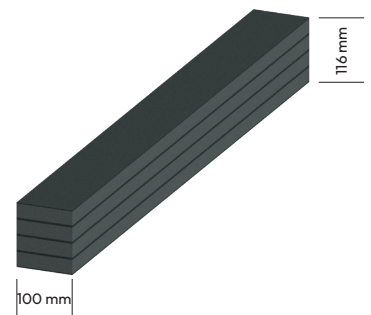
FIREFLYSpan 75 (NEW)

Provides exceptional protection suitable for wall and slab thicknesses capable of 180 and 240 minute FRL's. Suitable for joints requiring movement between 35 mm up to 75 mm wide.



FIREFLYSpan 75x75 (NEW)

Provides exceptional protection suitable for wall and slab thicknesses capable of 120 minute FRL's. Suitable for joints requiring movement between 35 mm up to 75 mm wide.



FIREFLYSpan 100

Provides exception protection in wall and slab thicknesses capable of up to 240 minute FRL's. Suitable for joints requiring movement between 51 mm up to 100 mm wide.



SH4

FRL
Up to -/240/240

Service
Linear gap seal in concrete slabs

Protection
FIREFLYSpan 75 /
FIREFLY Span 100



SH13

FRL
Up to -/240/240

Service
Linear gap seal in concrete slabs

Protection
FIREFLYSpan 75 /
FIREFLY Span 100



SH15

FRL
Up to -/240/240

Service
Linear gap seal in concrete slabs

Protection
FIREFLYSpan 75 /
FIREFLY Span 75 x 75



SV16

FRL
Up to -/240/240

Service
Horizontal linear gap seal in wall

Protection
FIREFLYSpan 75 /
FIREFLY Span 100



SV17

FRL
Up to -/240/240

Service
Vertical linear gap seal in wall

Protection
FIREFLYSpan 75 /
FIREFLY Span 100

Note

All FIREFLYSpan products are supplied in 1 metre lengths and are easily installed into tight joints using FIREFLYMastic for a secure, compliant fit.

Kingspan K-Roc Walls | Multiple Services

FIREFLY and Kingspan continue to lead the way in innovative firestopping solutions using FIREFLY products in K-Roc wall systems.

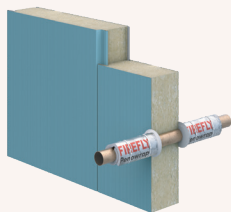
FIREFLYBatt seals provide access to hundreds of tested firestopping configurations, as detailed in our FAS190235 report. Our portfolio continues to expand, with an increasing number of tested service penetrations now available directly in the core holes report.

Currently, we offer solutions for:

- Copper pipes protected with FIREFLYMastic and FIREFLY Penowrap
- Plastic pipes protected with FIREFLYHP and FIREFLY FRF Collars
- 35 mm² PVC cables protected with FIREFLYMastic and Penowrap
- Mixed service bundles protected with FIREFLYHP and FIREFLY FRF Collars

These systems are suitable for K-Roc walls with fire resistance levels (FRLs) of -/120/120 and -/240/180, for wall thicknesses of 150 mm and 175 mm, respectively.

Given the popularity of K-Roc walls in food processing and storage facilities, data centres, micro-electronics environments, and pharmaceutical applications, these tested solutions are expected to see widespread adoption across the industry. With more testing underway, expect to see more of such services in the core hole report.

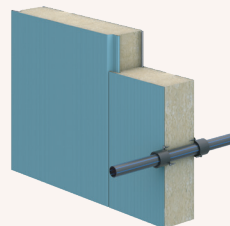


V531

FRL
-/120/120

Service
Up to 1 x DN25 type B copper pipe

Protection
FIREFLYMastic, FIREFLY Penowrap

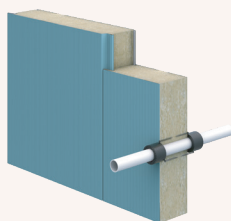


V532A & V532B

FRL
-/120/120 & -/240/180

Service
DN40 HDPE pipe

Protection
FIREFLYHP, FIREFLY FRF-40 Collar

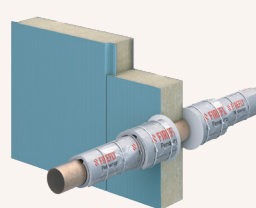


V533A & V533B

FRL
-/120/120 & -/240/180

Service
DN40 uPVC pipe

Protection
FIREFLYHP, FIREFLY FRF-40 Collar

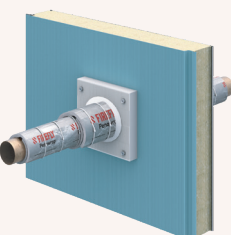


V534A & V534B

FRL
-/120/120 & -/240/180

Service
Up to 1 x DN100 type B copper pipe

Protection
FIREFLYMastic, FIREFLY Penowrap

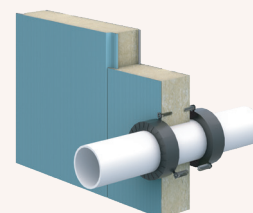


V534C

FRL
-/240/180

Service
Up to 1 x DN100 type B copper pipe

Protection
FIREFLYMastic, FIREFLYBatt, FIREFLY Penowrap

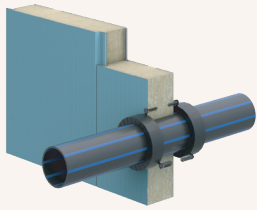


V535A & V535B

FRL
-/120/120 & -/240/180

Service
DN150 uPVC pipe

Protection
FIREFLYHP, FIREFLY FRF-150 Collar

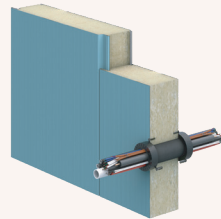


V536A & V536B

FRL
-/120/120 & -/240/180

Service
DN160 HDPE pipe

Protection
FIREFLYHP, FIREFLY FRF-150
Collar

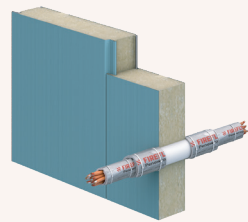


V537A & V537B

FRL
-/120/120 & -/240/180

Service
Mixed services bundle

Protection
FIREFLYHP, FIREFLY FRF-100
Collar

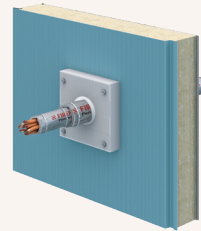


V538A

FRL
-/120/120

Service
Up to 8 x 4C+E PVC cables

Protection
FIREFLYMastic, FIREFLY
Penowrap

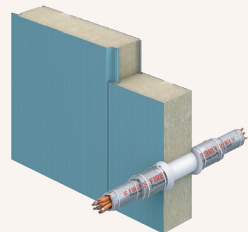


V538B

FRL
-/180/180

Service
Up to 8 x 4C+E PVC cables

Protection
FIREFLYMastic, FIREFLYBatt,
FIREFLY Penowrap



V538C

FRL
-/240/180

Service
Up to 8 x 4C+E PVC cables

Protection
FIREFLYMastic, FIREFLY
Penowrap

FAS190236 RIR 1.21A | New Systems

| ID | Service | Separating Element | Local FIREFLY Protection | FRL |
|-------|----------------------------|---|--------------------------|------------------------|
| SV16A | Horizontal Linear gap seal | Concrete, Masonry, Concrete block or AAC block wall | FIREFLYSpan 100 | Up to -/120/120 |
| SV16B | Horizontal Linear gap seal | Concrete, Masonry, Concrete block or AAC block wall | FIREFLYSpan 100 | -/180/180 & -/240/240 |
| SV16C | Horizontal Linear gap seal | Concrete, Masonry, Concrete block or AAC block wall | FIREFLYSpan 75 | Up to -/120/120 |
| SV17A | Vertical Linear gap seal | Concrete, Masonry, Concrete block or AAC block wall | FIREFLYSpan 100 | Up to -/120/120 |
| SV17B | Vertical Linear gap seal | Concrete, Masonry, Concrete block or AAC block wall | FIREFLYSpan 100 | -/180/180 & -/ 240/240 |
| SV17C | Vertical Linear gap seal | Concrete, Masonry, Concrete block or AAC block wall | FIREFLYSpan 75 | Up to -/120/120 |

| ID | Service | Separating Element | Local FIREFLY Protection | FRL |
|-------|----------------------------|---|---|---------------------------|
| SV20A | Horizontal Linear gap seal | Concrete, Masonry, Concrete block or AAC block wall | FIREFLYSpan 75 | Up to -/240/240 |
| SV20B | Horizontal Linear gap seal | Concrete, Masonry, Concrete block or AAC block wall | FIREFLYSpan 75 x 75 | -/180/180 & -/ 240/240 |
| SV20C | Horizontal Linear gap seal | Concrete, Masonry, Concrete block or AAC block wall | FIREFLYSpan 75 | -/180/180 & -/240/240 |
| SV20D | Horizontal Linear gap seal | Concrete, Masonry, Concrete block or AAC block wall | FIREFLYSpan 75 x 75 | Up to -/120/120 |
| SV21A | Vertical Linear gap seal | Concrete, Masonry, Concrete block or AAC block wall | FIREFLYSpan 75 | Up to -/240/240 |
| SV21B | Vertical Linear gap seal | Concrete, Masonry, Concrete block or AAC block wall | FIREFLYSpan 75 x 75 | -/180/180 & -/240/240 |
| SV21C | Vertical Linear gap seal | Concrete, Masonry, Concrete block or AAC block wall | FIREFLYSpan 75 | -/180/180 & -/240/240 |
| SV21D | Vertical Linear gap seal | Concrete, Masonry, Concrete block or AAC block wall | FIREFLYSpan 75 x 75 | Up to -/120/120 |
| SH4A | Linear gap seal | Concrete slab | FIREFLYSpan 75 | -/60/60 |
| SH4B | Linear gap seal | Concrete slab | FIREFLYSpan 75 | -/90/90 |
| SH4C | Linear gap seal | Concrete slab | FIREFLYSpan 75 (or) FIREFLYSpan 100 | -/120/120 |
| SH4D | Linear gap seal | Concrete slab | FIREFLYSpan 100 | -/180/180 |
| SH4E | Linear gap seal | Concrete slab | FIREFLYSpan 100 | -/240/240 |
| SH11A | Linear gap seal | Concrete slab | FIREFLYSpan 75 + FIREFLY Fabric | -/60/60 |
| SH11B | Linear gap seal | Concrete slab | FIREFLYSpan 75 + FIREFLY Fabric | -/90/90 |
| SH11C | Linear gap seal | Concrete slab | FIREFLYSpan 75 (or) FIREFLYSpan 100 + FIREFLY Fabric | -/120/120 |
| SH12A | Linear gap seal | Concrete slab | FIREFLYSpan 100 + FIREFLY Fabric | -/180/180 |
| SH12B | Linear gap seal | Concrete slab | FIREFLYSpan 100 + FIREFLY Fabric | -/240/240 |
| SH13A | Linear gap seal | Concrete slab | FIREFLYSpan 100 | Up to -/240/240 |
| SH13B | Linear gap seal | Concrete slab | FIREFLYSpan 75 | Up to -/120/120 |

| ID | Service | Separating Element | Local FIREFLY Protection | FRL |
|-------|-----------------------------|----------------------|--|--------------------------|
| SH13C | Linear gap seal | Concrete slab | FIREFLYSpan 100 | -/180/180 & -/240/240 |
| SH15A | Linear gap seal | Concrete slab | FIREFLYSpan 75 | Up to -/240/240 |
| SH15B | Linear gap seal | Concrete slab | FIREFLYSpan 75 x 75 | -/180/180 & -/240/240 |
| SH15C | Linear gap seal | Concrete slab | FIREFLYSpan 75 | -/180/180 & -/240/240 |
| SH15D | Linear gap seal | Concrete slab | FIREFLYSpan 75 x 75 | Up to -/120/120 |
| V531 | Up to 1 X DN25 Copper pipe | Kingspan K-Roc™ wall | FIREFLYMastic + FIREFLY Penowrap | -/120/120 |
| V532A | DN40 HDPE pipe | Kingspan K-Roc™ wall | FIREFLY HP + FIREFLY FRF-40 fire collar | -/120/120 |
| V532B | DN40 HDPE pipe | Kingspan K-Roc™ wall | FIREFLY HP + FIREFLY FRF-40 fire collar | -/240/180 |
| V533A | DN40 UPVC pipe | Kingspan K-Roc™ wall | FIREFLY HP + FIREFLY FRF-40 fire collar | -/120/120 |
| V533B | DN40 UPVC pipe | Kingspan K-Roc™ wall | FIREFLY HP + FIREFLY FRF-40 fire collar | -/240/180 |
| V534A | Up to 1 X DN100 Copper pipe | Kingspan K-Roc™ wall | FIREFLYMastic + FIREFLY Penowrap | -/120/120 |
| V534B | Up to 1 X DN100 Copper pipe | Kingspan K-Roc™ wall | FIREFLYMastic + FIREFLY Penowrap | -/240/180 |
| V534C | Up to 1 X DN100 Copper pipe | Kingspan K-Roc™ wall | FIREFLYMastic + FIREFLY Penowrap | -/240/180 |
| V535A | DN150 uPVC pipe | Kingspan K-Roc™ wall | FIREFLY HP + FIREFLY FRF-150 fire collar | -/120/120 |
| V535B | DN150 uPVC pipe | Kingspan K-Roc™ wall | FIREFLY HP + FIREFLY FRF-150 fire collar | -/240/180 |
| V536A | DN160 uPVC pipe | Kingspan K-Roc™ wall | FIREFLY HP + FIREFLY FRF-150 fire collar | -/120/120 |
| V536B | DN160 uPVC pipe | Kingspan K-Roc™ wall | FIREFLY HP + FIREFLY FRF-150 fire collar | -/240/180 |
| V537A | Mixed service bundle | Kingspan K-Roc™ wall | FIREFLY HP + FIREFLY FRF-100 fire collar | -/120/120 |
| V537B | Mixed service bundle | Kingspan K-Roc™ wall | FIREFLY HP + FIREFLY FRF-100 fire collar | -/240/180 |

| ID | Service | Separating Element | Local FIREFLY Protection | FRL |
|-------|---|----------------------|----------------------------------|-----------|
| V538A | Up to 8 x 35 mm ² PVC 4C+E cable | Kingspan K-Roc™ wall | FIREFLYMastic + FIREFLY Penowrap | -/120/120 |
| V538B | Up to 8 x 35 mm ² PVC 4C+E cable | Kingspan K-Roc™ wall | FIREFLYMastic + FIREFLY Penowrap | -/180/180 |
| V538C | Up to 8 x 35 mm ² PVC 4C+E cable | Kingspan K-Roc™ wall | FIREFLYMastic + FIREFLY Penowrap | -/240/180 |

For further details regarding any of these systems sign up for FIREFLY PFP for desktop or mobile, via our website; or to obtain a copy of the complete report reach out to your FIREFLY Account Manager or contact our customer service team at sales@tbafirefly.com.au

PFP

Experience the convenience of seamless project management across all your devices with FIREFLY PFP. Create projects, generate reports, track progress and ensure DTS compliance.

Getting Started

1. **Create a profile via our website or via the app**, available to download at the App store or Google Play
2. **Access your profile** via both desktop and app, or only via the desktop should you choose not to download the mobile app.
3. **Sign in** anytime to access 78,000+ tested and assessed systems, reports, project registers and more

Have a question about FIREFLY PFP, contact us today.

