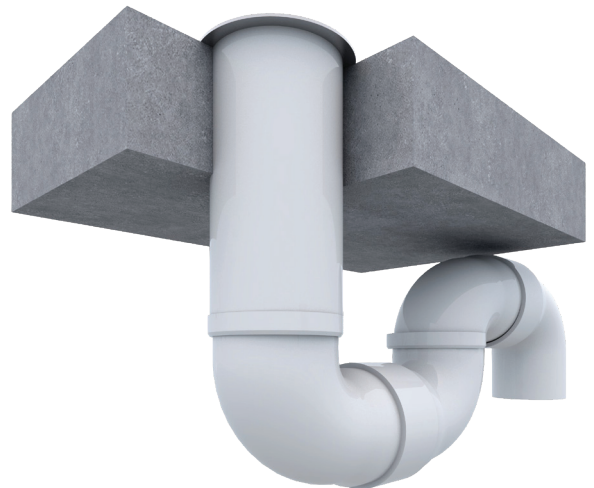


Installation Guide

Retrofit Floor Waste Collar

Step 1 | Application Review

Review the application and ensure that it is a floor waste application.



Step 2 | Compliance Verification

Identify the pipe material and size and ensure that it is covered by the relevant FIREFLY Retrofit Floor Waste Collar report – **uPVC pipes with nominal 50 mm and 100 mm are currently covered.**



uPVC, nom. 50 mm diameter

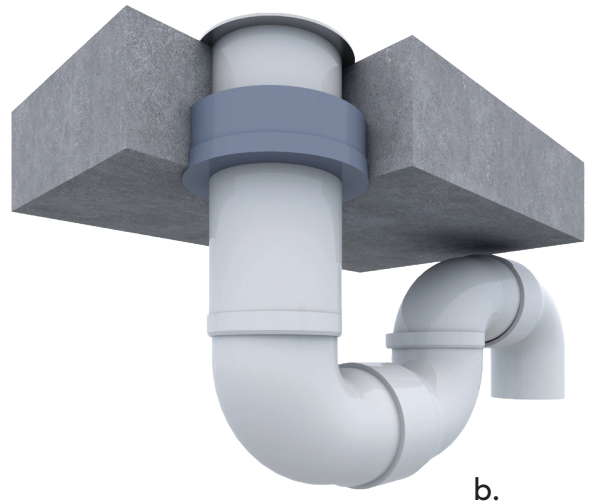
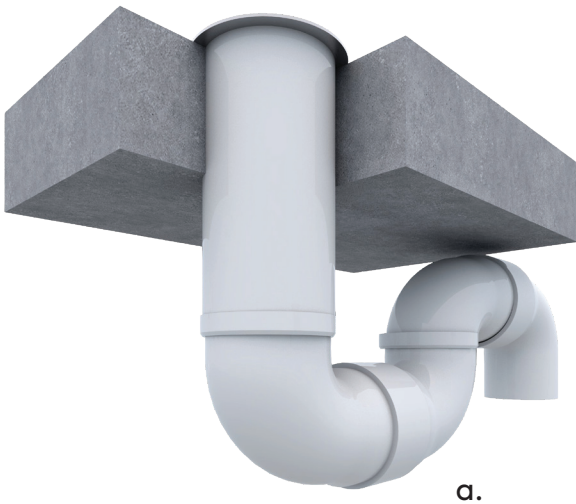


uPVC, nom. 100 mm diameter

Step 3 | Application Status

FIREFLY Retrofit Floor Waste Collars can be installed on different site scenarios:

- When a floor waste pipe has been cast-in without a passive fire protection measure installed;
- When a non-compliant, or unknown, cast-in collar type of solution was originally installed.

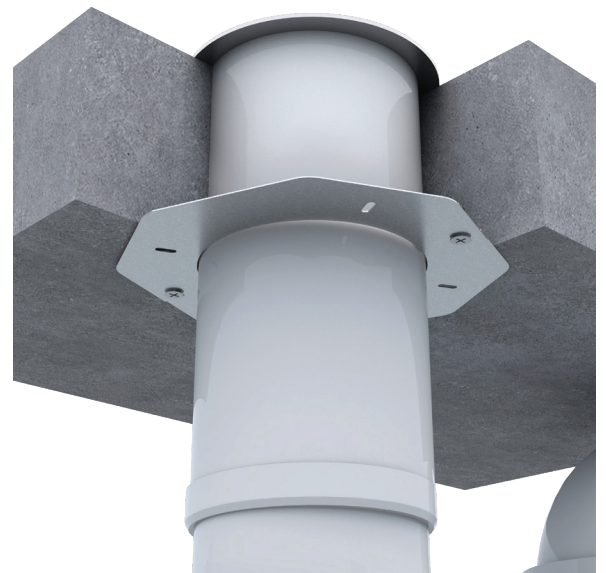
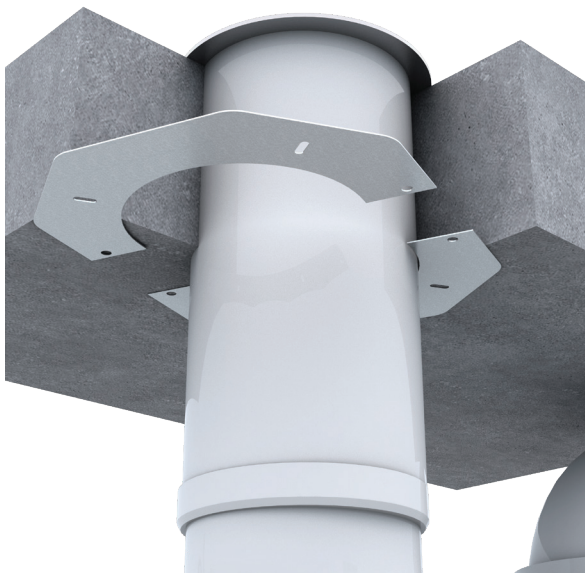
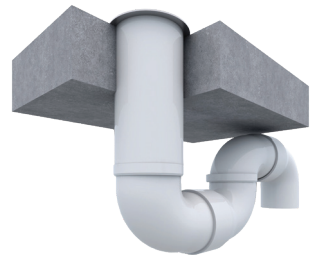


Step 4 | Plate Installation

Position the metal plates to the underside of the concrete slab, around the pipe, ensuring that any damage to the concrete and/or any installed rocket or existing cast-in collar are covered by the plates.

Overlap the plates so that the circular holes for the fixings are aligned.

Fix it using min. M6 x 40 mm steel fixings for concrete/masonry.



Step 5 | Collar Installation

Position the collar around the pipe and onto the metal plate.

Ensure that the collar lugs are aligned with the slotted holes on the plates.

Fix it using min. M6 x 40 mm steel fixings for concrete/masonry, or 14g x 45 mm long concrete/masonry screws.

